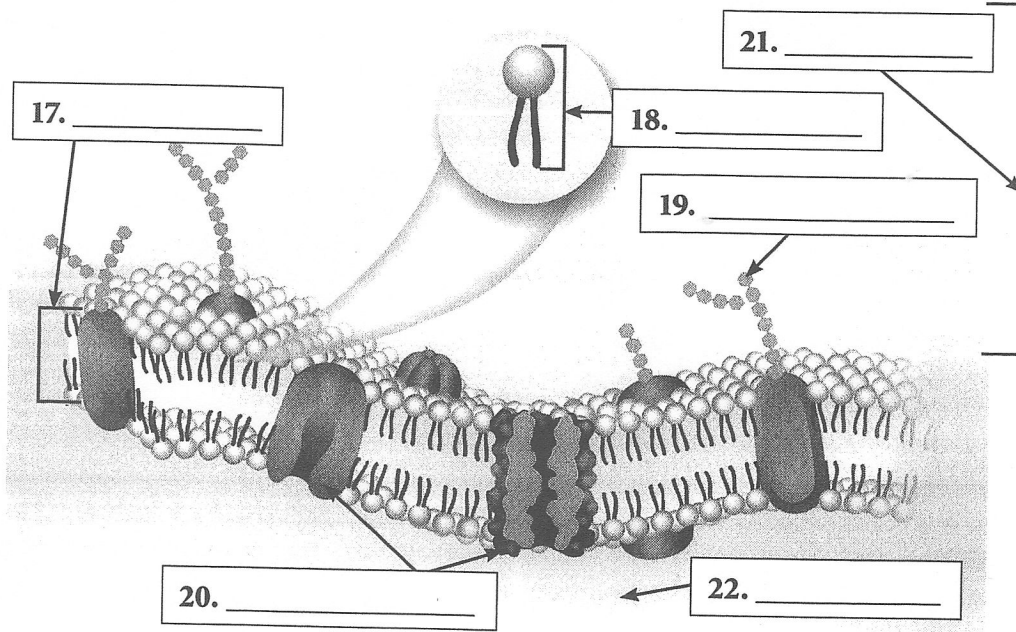


## Cellular Boundaries

Label the diagram with the following terms: *carbohydrate chain*, *cytoplasm*, *lipid*, *lipid bilayer*, *membrane proteins*, and *outside of cell*. Then, answer the questions that follow.



23. Lipids have a hydrophobic part and a hydrophilic part. Explain how these properties affect their ability to form a bilayer.

---



---



---

24. What is selective permeability? Why is it important to cells?

---



---



---

25. Why are cell membranes described as a "fluid mosaic"?

---



---



---