

## Pedigree Notes

What is a Pedigree?

- ❖ A pedigree is a chart of the \_\_\_\_\_ of family over \_\_\_\_\_.
- ❖ Scientists or a \_\_\_\_\_ would find out about your \_\_\_\_\_ and make this chart to \_\_\_\_\_.

Constructing a Pedigree

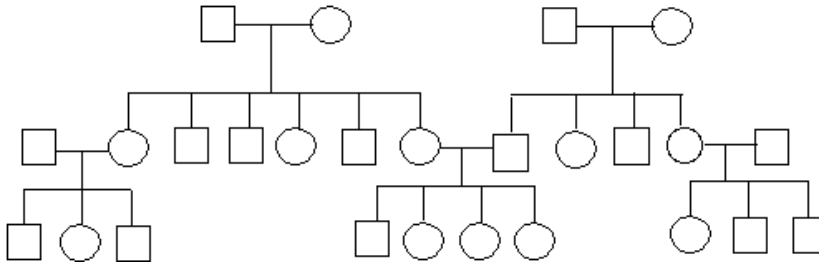
- ❖ Symbols

<b>Female</b>	<b>Male</b>

- ❖ Examples of Connected Symbols:

<b>Married Couple</b>	<b>Siblings</b>

- ❖ Example of what a pedigree chart looks like:



1. How many males?
2. How many females?

- ❖ Symbols in a pedigree chart

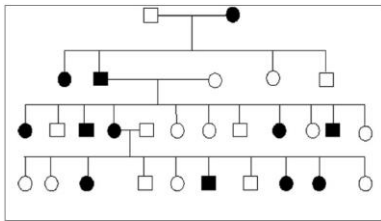
<b>Affected</b>	<b>Carrier</b>	<b>Deceased</b>

❖ Interpreting a Pedigree Chart

1. Determine if the pedigree chart shows an \_\_\_\_\_ or \_\_\_\_\_.

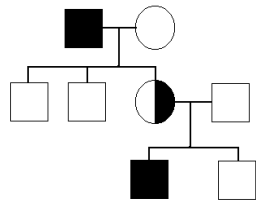
- If most of the \_\_\_\_\_ in the pedigree are \_\_\_\_\_ the disorder is \_\_\_\_\_
- If it is a \_\_\_\_\_ between \_\_\_\_\_ the disorder is \_\_\_\_\_

❖ Example of Pedigree Charts



Autosomal or X-linked?

How do you know?



Autosomal or X-linked?

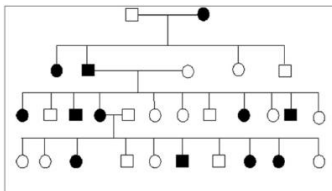
How do you know?

❖ Interpreting a Pedigree Chart

1. Determine whether the disorder is dominant or recessive.

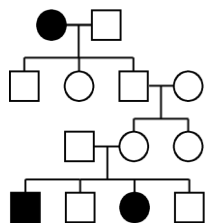
- If the disorder is \_\_\_\_\_, \_\_\_\_\_ of the \_\_\_\_\_ must have the \_\_\_\_\_.
- If the disorder is \_\_\_\_\_, neither parent \_\_\_\_\_ the disorder because they can be \_\_\_\_\_.

❖ Example of Pedigree Charts



Dominant or Recessive?

How do you know?



Dominant or Recessive?

How do you know?